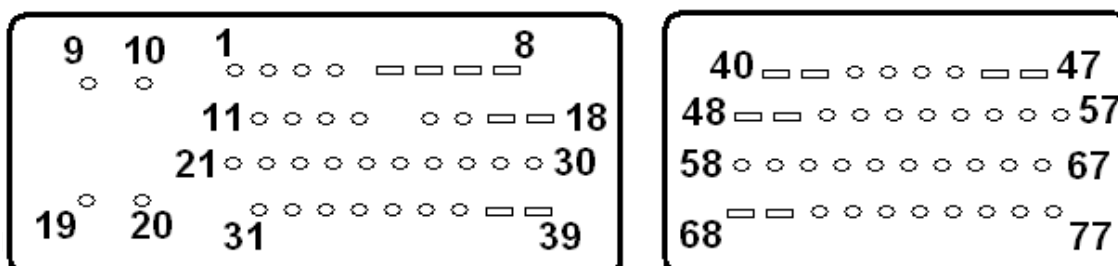


VDO MSM

Veículos: Classe A 160 e 190.



Conector ECU



Particularidades

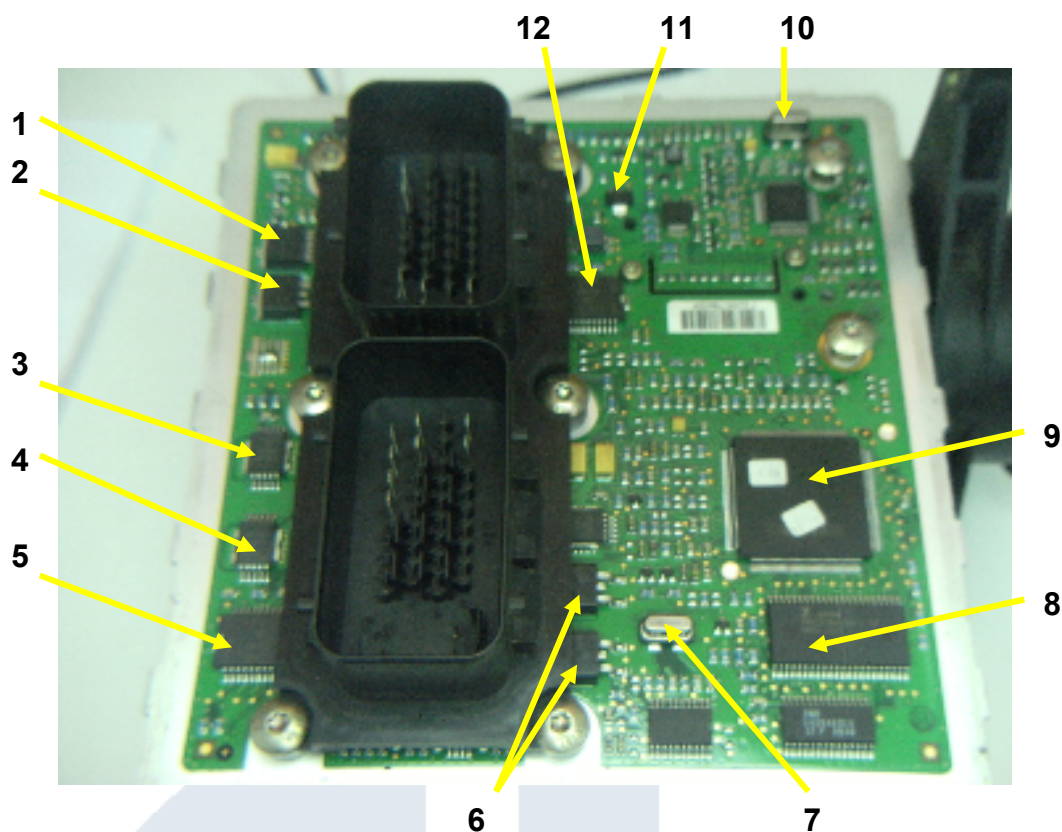
- O sensor de massa de ar e temperatura do ar são fixos na ECU.

Defeitos comuns:

- Falha no sensor de massa de ar.

Observação

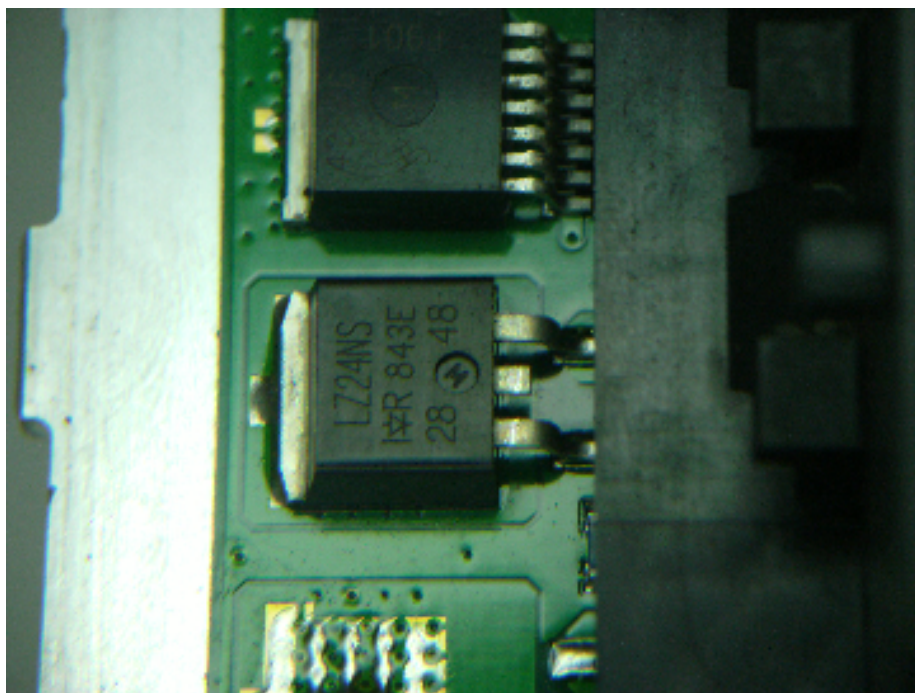
Vista Geral



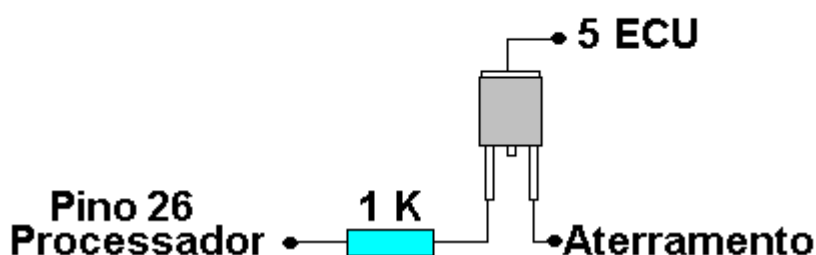
Principais componentes

1. 4267 G / F901 – 7 pinos;
2. LZ 24 NS – controle de aquecimento da sonda lambda;
3. VB 027 A - Drive de ignição – Cilindro 1 e 4;
4. VB 027 A - Drive de ignição – Cilindro 2 e 3
5. TLE 5216 G – 20 pinos – Multi drive dos injetores;
6. IRSFS 3010 S – Drives motor CC;
7. Cristal – 4 MHz;
8. 29F200 BA - Memória Rom;
9. Processador;
10. Cristal – 8 MHz;
11. Drive de controle da partida – linha 50;
12. TLE 5216 G – 20 pinos – Multi drive – Relê da bomba – canister.

LZ 24 NS – controle de aquecimento da sonda lambda

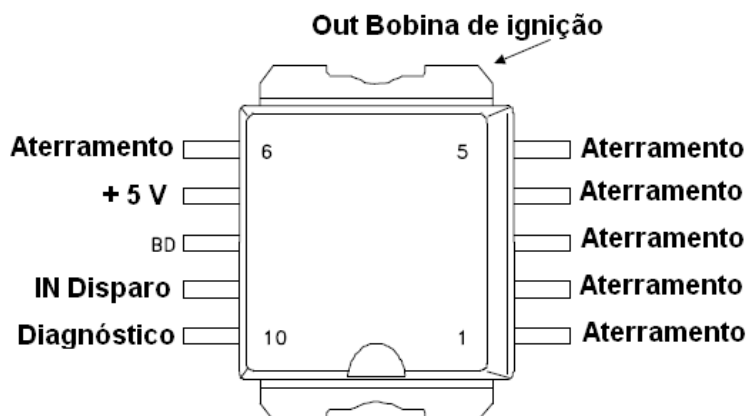


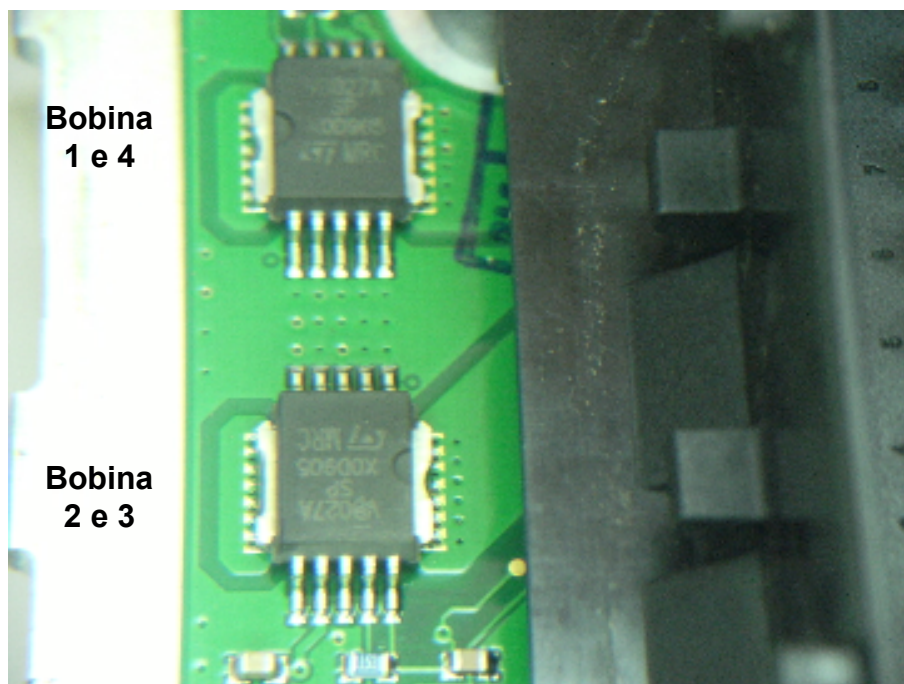
Controle de Aquecimento da Sonda



Drive das bobinas de ignição – VB 027 A

Cada disparo (pino 9) possui um resistor de 1 Kohm de limitador de corrente entre o drive e o processador.





Bobina de ignição 1 e 4

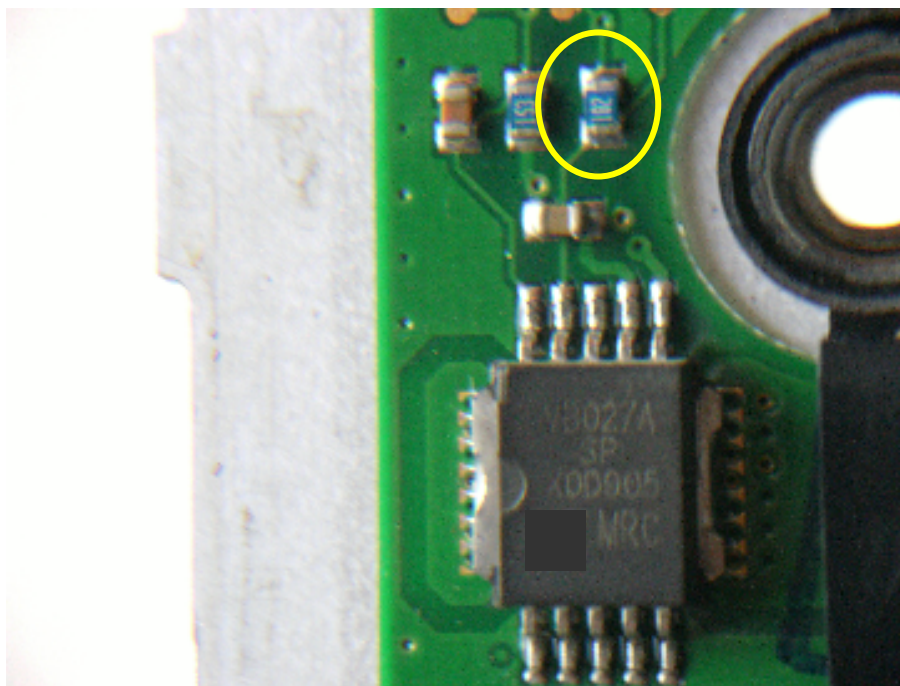
Pino Componente	Função
9	In- Disparo – Vem do pino 49 do processador.
Chassi	Out – pino 8 ECU

Bobina de ignição 2 e 3

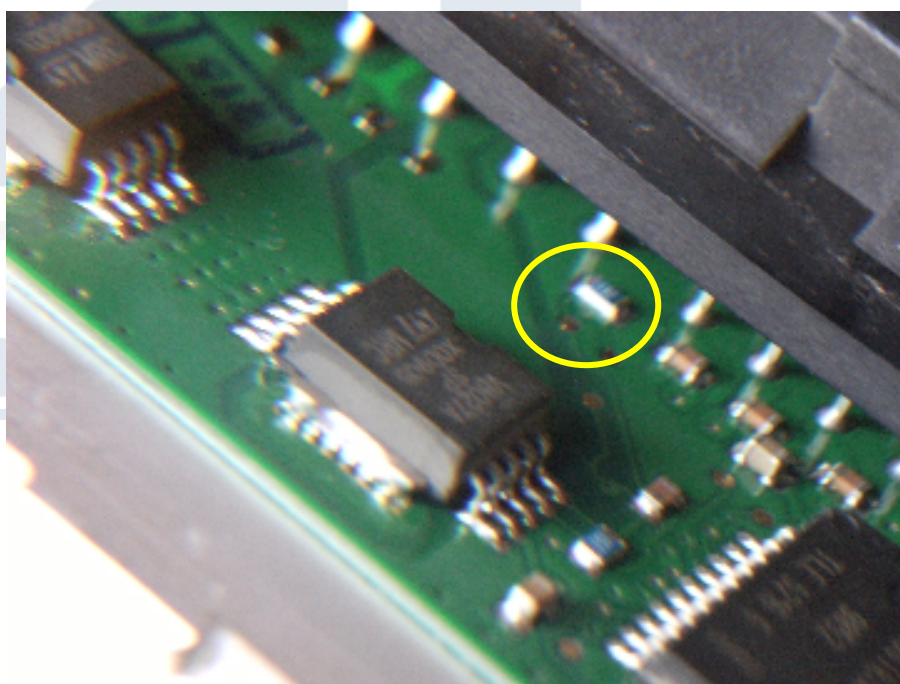
Pino Componente	Função
9	In- Disparo – Vem do pino 48 do processador.
Chassi	Out – pino 7 ECU

ELETRÔNICA AUTOMOTIVA

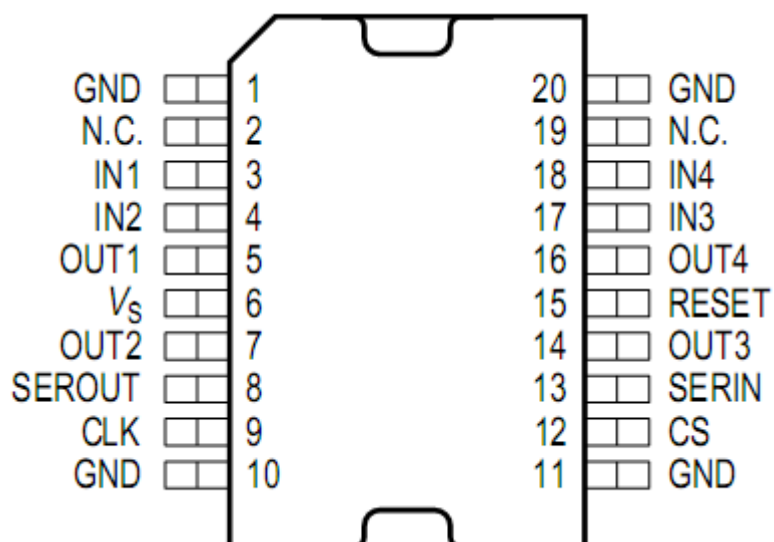
Resistor de 1 Kohm – limitador de corrente - Bobina 1 e 4



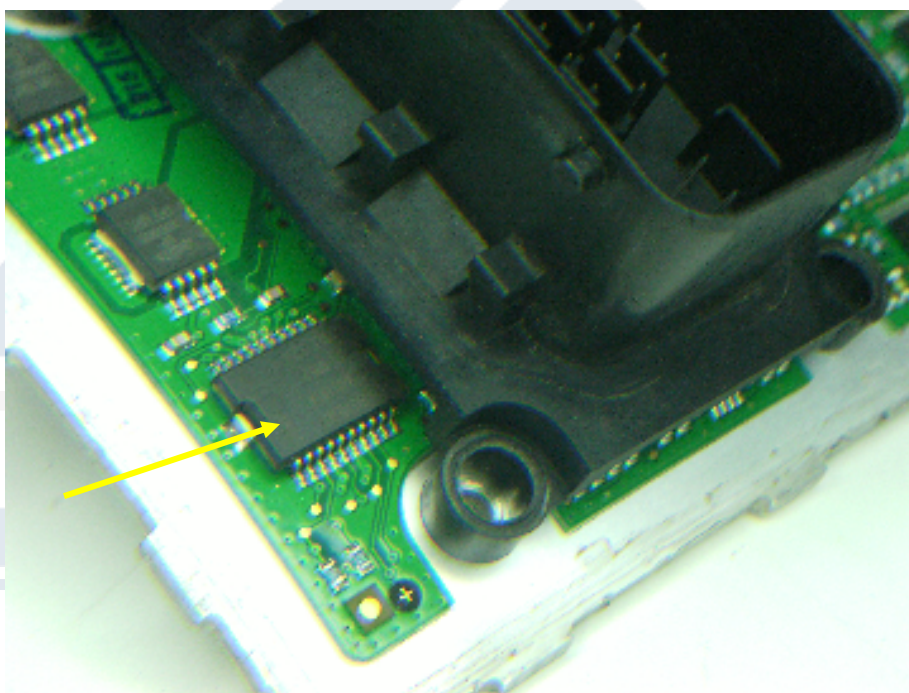
Resistor de 1 Kohm – limitador de corrente – Bobina 2 e 3



TLE 5216 G – 20 pinos

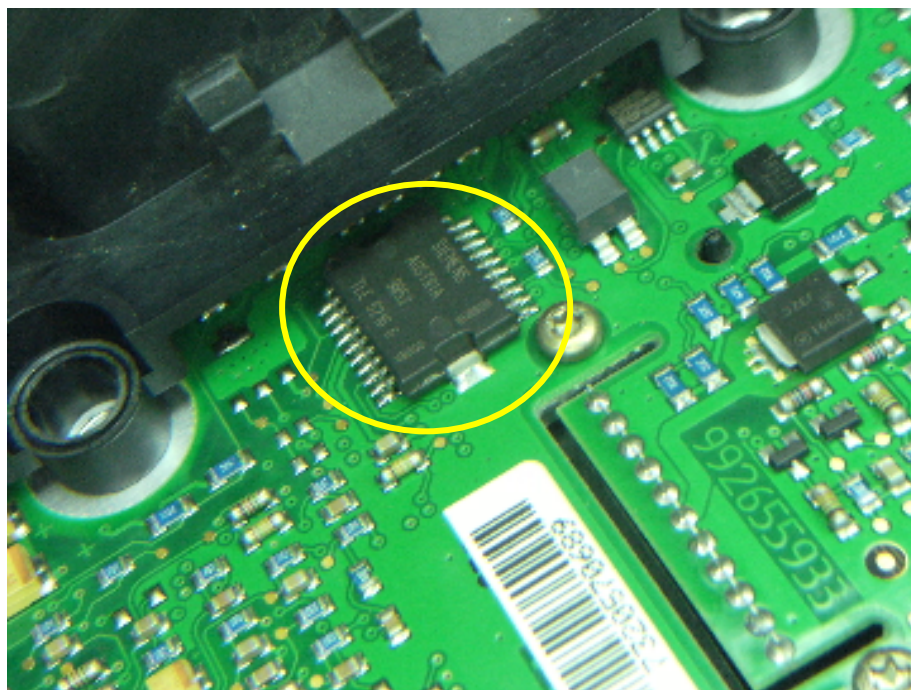


TLE 5216 G – 20 pinos – Multi drive dos injetores



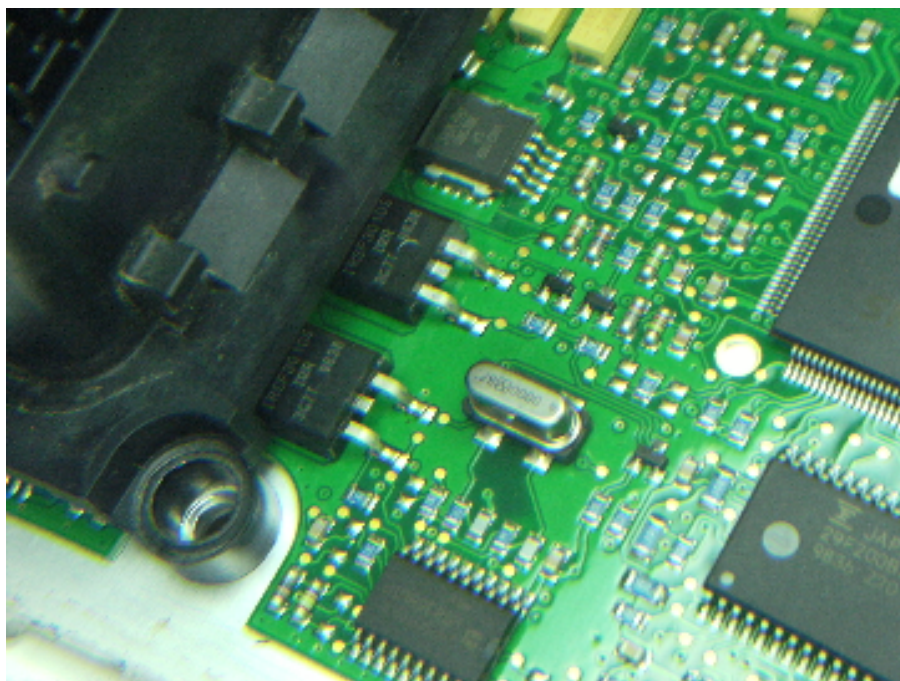
Pino Componente	Função
3	In – Disparo – Injetor 3
4	In – Disparo – Injetor 4
5	Out – Injetor 3 – Pino 3 ECU
7	Out – Injetor 4 – Pino 4 ECU
14	Out – Injetor 1 – Pino 1 ECU
16	Out – Injetor 2 – Pino 2 ECU
17	In – Disparo – Injetor 1
18	In – Disparo – Injetor 2
1 – 10 -11 – 20	Aterramento

TLE 5216 G – 20 pinos – Multi drive – Relê da bomba – canister

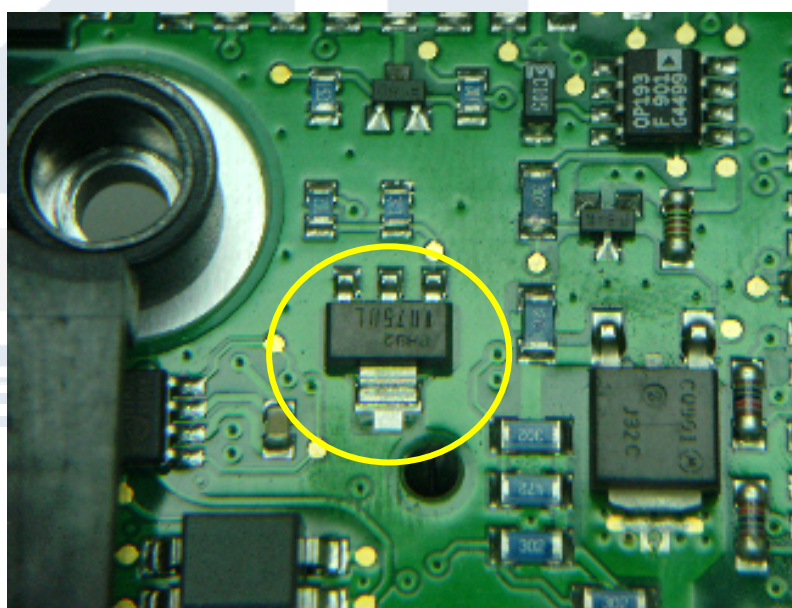


Pino Componente	Função
3	In – Disparo – Pino 74 ECU
4	In – Disparo – Canister
5	Out – Pino 74 ECU
7	Out – Canister – Pino 31 ECU
14	Out – Pino 71 ECU
16	Out – Relê bomba de combustível – Pino 73 ECU
17	In – Disparo – Pino 71 ECU
18	In – Disparo – Relê bomba de combustível
1 – 10 -11 – 20	Aterramento

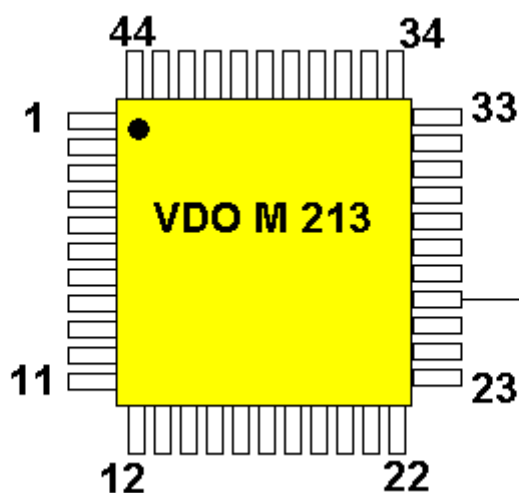
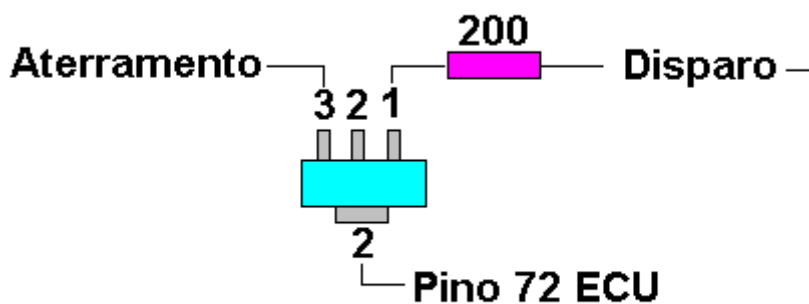
IRSFS 3010 S – Drives motor CC



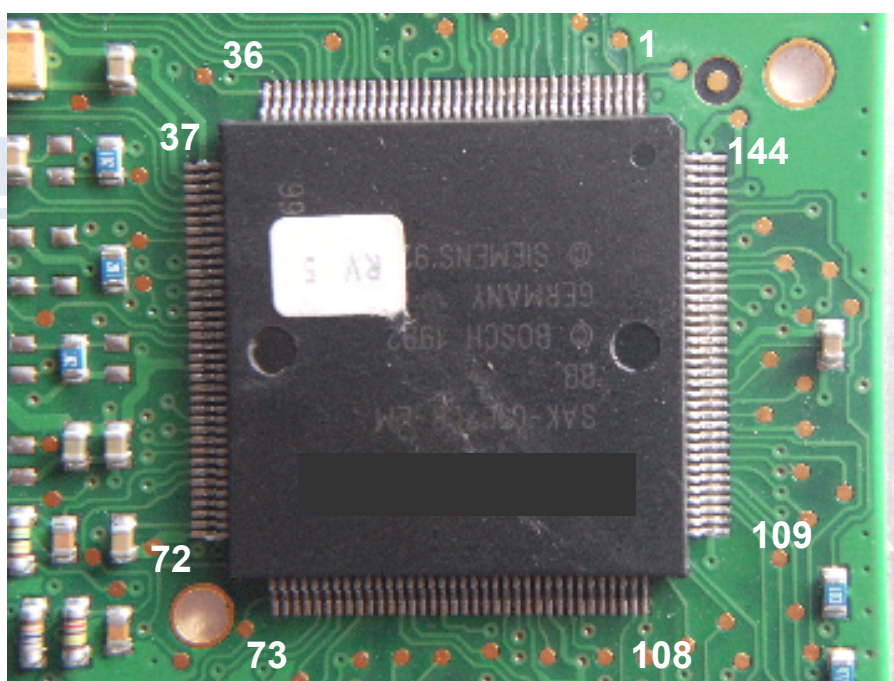
Drive de controle da partida – linha 50



Acionamento do Relê de partida



Processador

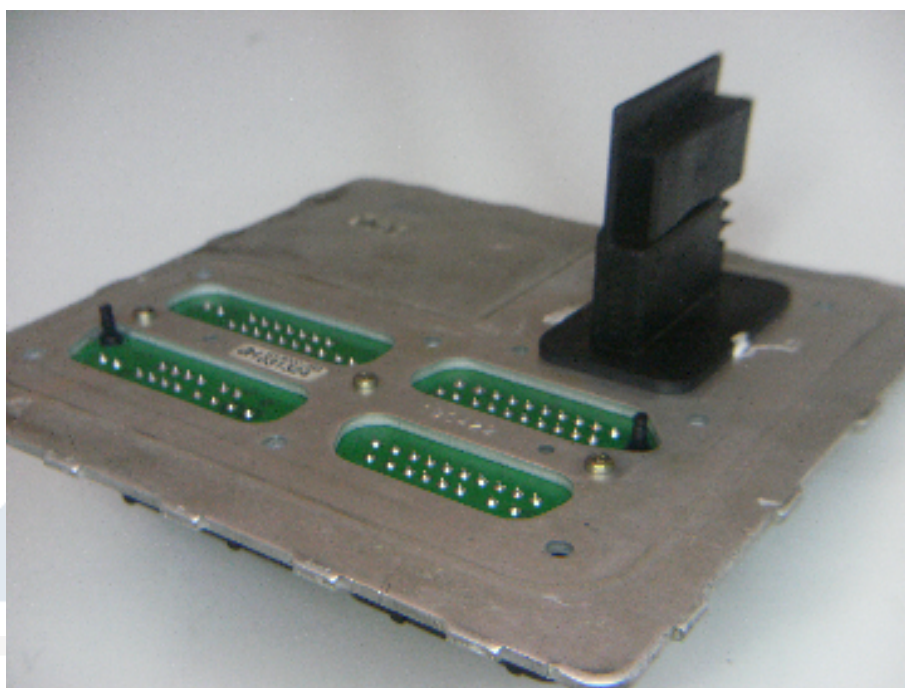


Medidor de massa

Esta ECU possui o medidor de massa incorporado à mesma;

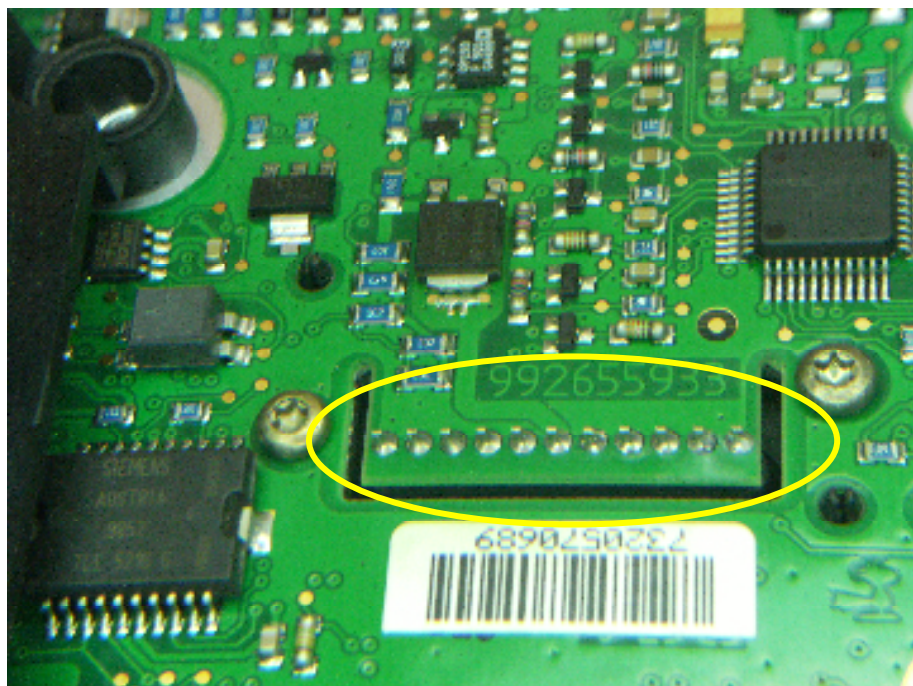
Tabela de teste no veículo – Utilizando Scanner

Rotação (RPM)	Kg / h	G / s
0	0	0
Marcha lenta	7 à 14	2 à 4
2.000	16 à 23	4 à 6
3.000	25 à 33	6 à 9
4.000	37 à 54	10 à 15



ELETRÔNICA AUTOMOTIVA

Vista dos terminais do medidor de massa



TECNOCAR
ELETRÔNICA AUTOMOTIVA